



# The Carbondale Presbyterian

Editor: Linda Brandon web address: <http://www.firstprescdale.org>  
The First Presbyterian Church, 310 S. University Ave., Carbondale IL 62901  
contact us at: [firstpresnews@gmail.com](mailto:firstpresnews@gmail.com)

Sunday Worship - 10 a.m.  
Sunday Fellowship - 11 a.m.

Mum Sale sign up ends  
Sept. 4

Pick up Mums - Sept.  
8 & 9

Session - Sept. 10

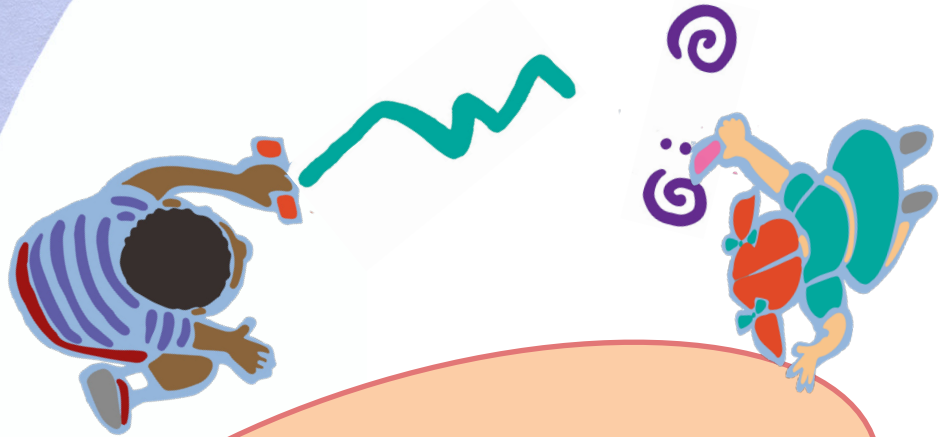
Dinner Group - Sept. 19

## Church Office Hours

Monday through Thurs-  
day 9:00-11:30 a.m. and  
12:30-4:00 p.m.

## Phone Extensions:

Rev. Bean 101  
Barb 100  
Carlyn: 106  
SI Diaper Bank 110



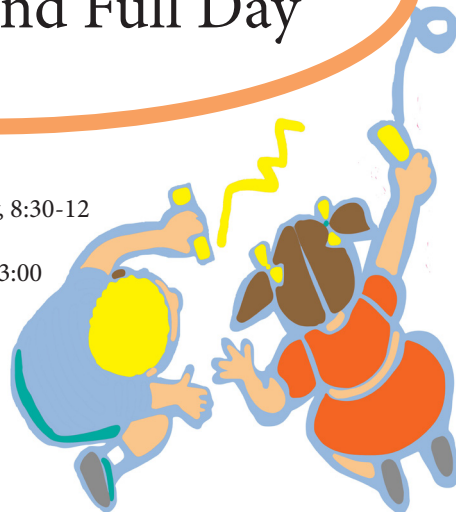
Presbyterian  
Child Development  
Preschool

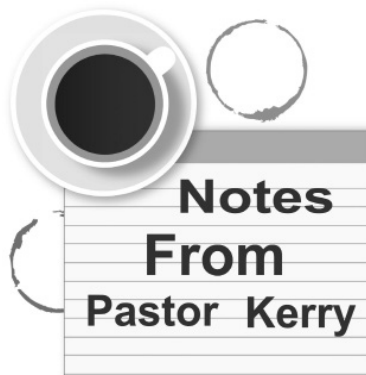
# GROWS

Small classes & certified  
teachers

## Half-day and Full Day

2 yr. old class Tues/Thursday, 8:30-12  
2 yr. old class Monday/Wednesday/Friday, 8:30-12  
3-5 yr old class Monday-Friday, 8:30-12  
Full Day 2-5 yr. old Monday-Friday, 8:30-3:00  
Full Day + Early & After Care 2-5 yr. old  
Monday- Friday, 8:00-5:00





## Gaining Momentum

You may be wondering where things stand in the process of our congregation calling a new pastor. Actually, some initial and important steps have already been taken. Soon, more pieces will be falling into place and the process will be noticeably picking up steam.

The session met in May with Rev. Sterrett Collins from the presbytery's Ministry Transition Team. Sterrett also recently sent us a newly-revised guidebook from the presbytery which spells out the search process in detail, especially the calling and work of the Pastor Nomination Committee (PNC). The session is studying the guidebook prior to our September meeting.

We'll then start putting together a questionnaire or survey instrument for all of you in the congregation to fill out. It will be asking what you feel are the top priorities of the church moving into the future. You may remember that we completed lengthy surveys from Holy Cow consulting back in the 2014, and shortly after my arrival in 2019. I'm guessing that this time around the survey/questionnaire will be much simpler and we'll be able to process it "in house". This will save time and money.

The session will be deciding whether the PNC should be formed *before* the survey process- or *during*- or *after*. The advantage of forming the PNC prior to the survey is that they would have input on the questions asked. On the other hand, being on the PNC is time-intensive, and we'll really don't want to pile the work on.

Once the PNC is formed and the results of the survey have been studied, work on the church's dossier will begin. This dossier is submitted to the denomination's Church Leadership Connection, which exists to help match searching congregations with candidates who are looking to serve as Pastor. The candidates read the dossier and decide whether or not to send in their personal information forms for the PNC to review.

The final steps include interviews with potential candidates, watching them preaching (live or on video), having them come visit our church, negotiating terms of call, and asking the congregation to vote on their call as the new Pastor.

All of this, as you can imagine, can take a while. It involves, as I've said, time and energy- and prayer. So it's good that we're already getting started. Of course, my intention is to continue to serve you as Covenant Pastor until December of 2025. That factors into plans and considerations as well.

I will do my best to keep you all informed every step of the way on this journey towards the future of First Presbyterian Church. If you have any questions, please let me know.

I hope you all have a blessed and beautiful September!

*Kerry*

In sure and certain hope...

*In sure and certain hope of the resurrection to eternal life,  
though our Lord Jesus Christ...*

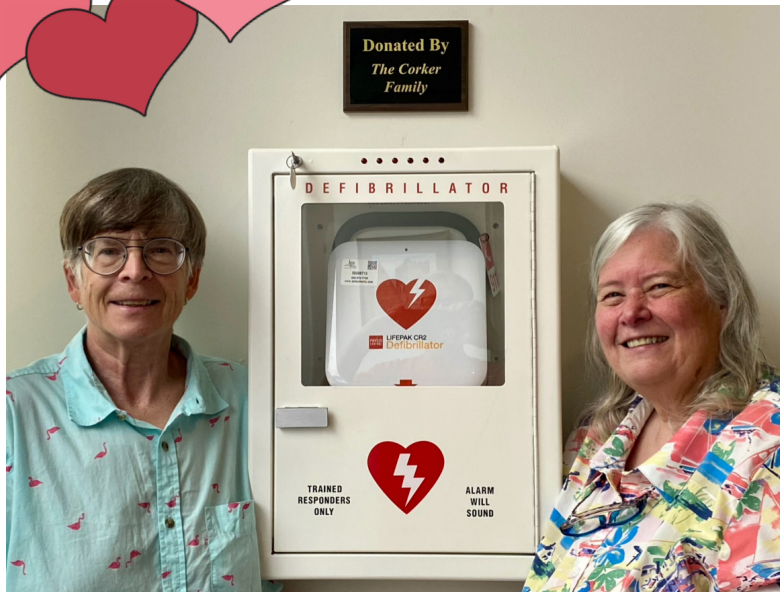
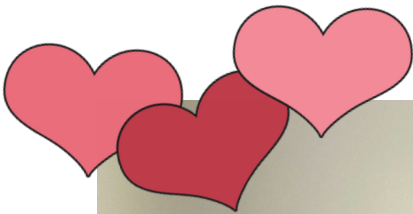
*The church family extends sympathy to the family and friends of*

## Jean Ellen Armentrout Pulliam

January 9, 1929 to August 8, 2024

*I am the resurrection and the life, says the Lord. Those who believe  
in me, even though they die, will live, and everyone who lives and believes  
in me will never die.*

John 11:25-26



Beth and Deb Corker

**A BIG**  
**Thanks!**

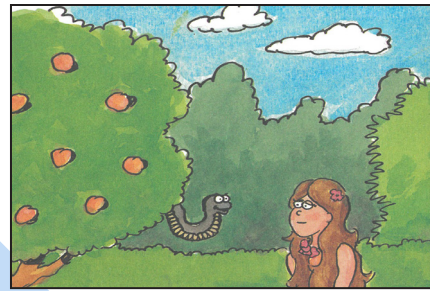
Beth and Deb donated an AED (Automated External Defibrillator) to replace the one which was stolen from the church Narthex about two years ago. Later this fall, First Aid training will be offered to interested individuals. Thank you, Corker family.

Photo by Rolanda Quick



## NEW ROOMS for CHURCH SCHOOL

We're excited to be moving church school downstairs in the newer wing of the church - rooms 041 and 043. We'll have space to store supplies in the same room we teach in and be able to clean up easily after art projects with a sink in the same room. The first room is tailor made for us with two giant maps of the Old Testament land and Jesus' ministry area painted on one wall. We'll be using that one for both art and computer learning, while the second room will be perfect for acting out stories and playing learning games. We hope to be ready to use at least one of the rooms by September 1.



Church School will resume Sunday, September 1. We'll look at the creation story, and move late in the month to the story of Adam and Eve's temptation in the garden.



## Presbyterian Men's GROUP

The Presbyterian Men's Fellowship meets monthly on the fourth Thursday of the month at noon. We share lunch in the Fellowship Hall, followed by discussion in the Parlor. It is our intention to decide as a group each month what the topic of discussion will be for the following month. We ask for an offering of \$10.00 per attendee to cover the cost of refreshments and to add to the restricted line to be used for various good causes. Please join us!



photo by Lisa Hollabaugh

We bid a sad farewell to Deanna and Nyghél Byrd (pictured with daughter Nyla) who lent their voices to the church choir for upwards of eight years. The Byrds have purchased a home in Cape Girardeau, Missouri where Nyghél will be closer to his job at SEMO, while Deanna continues hybrid work with the Hyatt Corporation. Best wishes!

## PATRICK

Last month we bid farewell to Patrick Blessing who has moved away from the area to be closer to family. Patrick was a regular worship attendee known for being Pastor Kerry's sermon timekeeper. We will miss Patrick and wish God's blessings on his family and future.

Patrick Blessing

223 W College Street

Sparta, Illinois 62286-2045



Photo by Rolanda Quick



**OUR CHURCH'S**  
**HISTORY**

As our very small group delves into the history of our church, it is our goal to periodically share some of our discoveries. This is one of them. Just as mission work is central to our congregational identity today, it was also true in the past. Our church sponsored a mission at 310 East Birch Street starting somewhere around 1900 and continuing until December 15, 1928. Notice how definite the ending date and how nebulous the starting date. That is a challenge of archival research! It began with a donation of property from Sam Brusch and Hugh Lauder, also leaders in getting our current church building constructed. It was led by Amanda Templeton. She was born in 1855 in Indian Territory (present day Oklahoma) where her father was a missionary. Amanda ran the mission for 25 years. The mission's financial transactions are recorded in the Annual Report of the church and include both donations and expenditures. There is mention of a Sunday School and a lovely garden and greenspace maintained by Miss Templeton for the neighborhood. After Amanda's death in December of 1925, there was an effort to keep it going, but on December 15, 1928 at a congressional meeting, it was



Amanda Templeton's mission church

voted to dispose of the property with the proceeds to be donated to the Presbyterian Church USA for the Ministerial Relief Sustentation Fund as requested by the original donors, Mr. Lauder and Mr. Brusch.

There is much we do not know. What was the mission's function beyond Sunday School? Were there Sunday Services? Were there classes? Was the inception of the mission spurred by the church or was this the vision of Amanda Templeton and she convinced the church to support it? We do not know much about the building. Was it there when the property was donated or did the church build it? If it was there (which seems likely as we don't find any mention of building supplies) what was it? If anyone has any answers to these questions, please contact Jill or Harry.

---

The August Dinner Group meeting was held at Montgomery Place in Carterville. The owners have restored an old building in downtown. We were given a room all to ourselves that allowed for easy conversation. The food was inventive and the service excellent. There were eleven attending. We will meet September 19 at 5:30 at one of our favorites, Cumares' in Murphysboro for some great Italian food. If you plan to attend email Jill at: [jillhertzing@aol.com](mailto:jillhertzing@aol.com).



*Dinner*  
**Group**

# PRESCHOOL

What an amazing summer we had at Presbyterian Preschool. Our summer school was a HUGE success, and fun memories were made.

With school just around the corner, we are excited to announce that Presbyterian Preschool is now offering students full-day preschool. We are off to a great start with enrollment this school year. There are 20 students enrolled, 10 in the Frog class and 10 2-year-olds. We have restructured our classes and schedules to offer more options to support more families and their needs. We now have 3 class options for 2 year olds for half day or full day to attend 2 days, 3 days or 5 days a week. Our Frog class will now include 3-5 year olds which reflects the age structure of the public pre-K programs and we offer half day or full day schedules 3 or 5 days a week.

Thank you to the church and all of you for your continued support of this mission ministry and community outreach program. We are looking forward to an exciting 2024-2025 school year.

## *Presbyterian Preschool*



Purchase mums from us and support our preschool and a local farm.

### The Mums are Gorgeous

Preorder until Wednesday, September 4 and pickup at the Church Sunday or Monday September 8 & 9.

Thanks for your support.



### INTRODUCING OUR NEW TEACHER

This is Jazzilene Martin's first year teaching at Presbyterian Preschool. She is a psychology student at SIU, and currently finishing her last year of undergrad studies with a focus on child psychology. Jazzilene's goal is to establish a therapy firm that provides accessible, high quality psychological care to low income and minority communities. Outside of her passion for psychology she enjoys weightlifting, cooking, hiking, swimming, and spending time with her friends and family.

Jazzilene will join our current staff of Kimberly Tyra, Lia Driscoll, and substitute teacher Darlene Gaskins.



# Summer Fun at Presbyterian

# Preschool



# The Green Calendar

*The Green Guardians encourage you to reflect on how you can observe and celebrate the environment in **September 2024**. You are encouraged to do a web search for the September days listed below to learn about their origin, recommended activities, and importance.*

**4th:** National Wildlife Day (Hurrah for all wildlife!)

**5th:** Amazon Rainforest Day (Highlighting a major ecological challenge)

**7th:** International Day of Clean Air (and all of its many benefits)

**16th:** World Ozone Day (Promoting the ongoing challenge for ozone balance)

**18th:** World Water Monitoring Day (Recognizing the importance of conserving the use of available water)

**21st:** International Day of Peace

[While not exclusively environmental, this day underscores the link between global peace and sustainability.]

**21st:** National Cleanup Day (Always a good-effort day)

**21st:** Zero Emissions Day (Promoting a big, ongoing challenge)

**22nd:** World Car Free Day (Promoting alternative transportation methods)

**26th:** World Environmental Health Day (Promoting environmental health to support good human health)

**27th:** National Public Lands Day (Celebrating our National Parks and so much more)

**27th:** National Crush a Can Day (Recycle those cans)

**28th:** World Rivers Day (Celebrating the world's waterways)

**29th:** International Day of Awareness of Food Loss and Waste



Birthdays	Anniversaries
7 John Hooker	2 Peter & Kara Hertzling
8 Anne Barrett	3 Gerry & Cindy Buys
9 Rich Zimmermann	
10 Mimi Williams	
12 Carolyn Hollabaugh	
25 Sue Bailey	
15 Rob Jensen	
28 Grant Hertzling	





CAMP  
CAREW  
FUN



SOLAR O  
V  
E  
N



S'MORES



Photos by Lisa Hollabaugh

Angela Povolish, an attorney with expertise in estate matters and real estate law, will speak at the September 18 meeting of Southern Illinois Learning in Retirement (SILIR). She will discuss the role of the executor of a will and answer questions about how to select an executor, roles, obligations, and pitfalls of an executor. A native of Murphysboro, Angela is currently with the Campanella law firm in Carterville, having previously practiced with FMGR in Carbondale.



**S.I. Learning  
in Retirement**

The presentation, free and open to the public, will begin at 10:30 a.m. at the Epiphany Lutheran Church at 1501 W. Chautauqua, Carbondale. A coffee hour begins at 9:30 am. For more information about SILIR contact Diane McIntyre at 618-536-7751, email [silir@siu.edu](mailto:silir@siu.edu), or check the website: [conferenceservices.siu.edu/silir](http://conferenceservices.siu.edu/silir).



# Session Synopsis

August 13, 2024

We began our meeting with prayer and the reading of Proverbs 9:1-9.

Our first discussion item was the Pastor Search process (see *Notes from Kerry*). We received a copy of a newly-published guidebook from the presbytery's Ministry Transition Team to help us navigate the Search process. The session is going to read over the entire guidebook carefully and will start making decisions about important items like what sort of self-study (mission study) is best- and when a Pastor Nominating Committee should be formed. We are also re-visiting the results of the Church Assessment Tool from Holy Cow Consulting in 2019.

Other noteworthy items:

- An inventory of daycare items has been completed.
- Lisa Hollabaugh was approved as the new Church Treasurer with great thanks to Linda Brandon for her years of excellent and faithful service in that role.
- Worship ministries is designing a questionnaire to ask congregation members their opinions about the Sunday morning worship time remaining at 10:00am.
- The PCUSA Board of Pensions is changing how insurance for church professionals is provided- and how the churches will be billed. We discussed a couple of options regarding my compensation package for 2025.
- Worship and Youth Fellowship will take place at Camp Carew on Sunday, 8/25.
- We are exploring the possibility of underwriting programming on WSIU and WDBX to better get the word out to the community about our church
- "The Daily Message: Through the Bible in One Year" will begin in early September. It is being organized and taught by Rev. Judy Beyler.

I will also note that all of the minutes, financial reports, and ministry reports were accepted and approved.

Our next meeting is Tuesday, September 10 at 7 p.m.

*Kerry*



Contributions to First Presbyterian Church of Carbondale are tax deductible under 501(c)(3) guidelines (consult your tax professional). Donate on Sunday mornings, by direct deposit or mail, by clicking the "Give Now" button at [www.firstpresdale.org](http://www.firstpresdale.org) or by scanning this QR code with your smartphone camera.

Financial Report July 2024

58% of the year completed

Line	Income	Budget	
Pledges	\$ 135,893.00	\$ 220,000.00	62%
Nonpledge Offerings	\$ 5,822.13	\$ 12,000.00	49%
Per Capita	\$ 1,540.00	\$ 1,500.00	103%
Trans. From Investments	\$ 15,000.00	\$ 41,371.01	36%
Miscellaneous	\$ 12,971.28	\$ 19,225.00	67%
<b>Totals</b>	<b>\$ 171,226.41</b>	<b>\$ 294,096.01</b>	<b>58%</b>

Line	Expenditures	Budget	
Mission	\$ 3,089.63	\$ 13,770.00	22%
Pastoral Ministry	\$ 49,708.87	\$ 88,573.99	56%
Staff	\$ 49,830.56	\$ 88,577.02	56%
Christian Education	\$ 1,111.73	\$ 3,050.00	36%
Worship & Music	\$ 150.00	\$ 3,475.00	4%
Comm/Administration	\$ 9,798.25	\$ 18,150.00	54%
Property/Capital	\$ 38,974.40	\$ 76,100.00	51%
Christian Nurture	\$ 714.55	\$ 2,400.00	30%
<b>Total</b>	<b>\$ 153,377.99</b>	<b>\$ 294,096.01</b>	<b>52%</b>

Revenues over Expenses \$ 17,848.42

**Oops**

This evening at 7 p.m. there will be a hymn singing in the park across from the church. Bring a blanket and come prepared to sin.

This appeared in some other church publication, not one of ours.



**First Presbyterian Church**  
Carbondale, Illinois

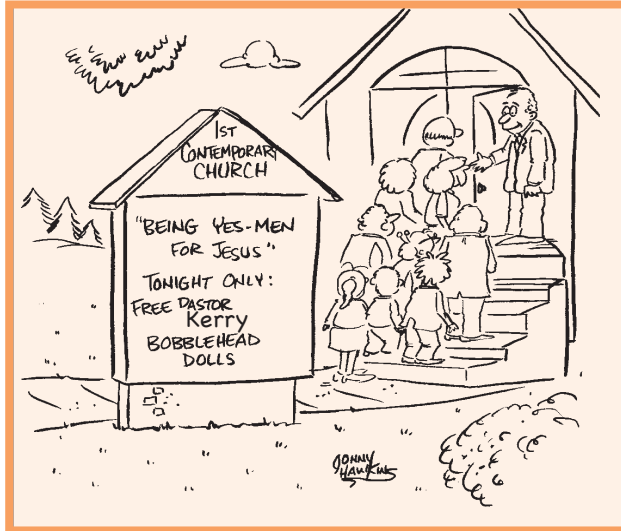
310 South University Ave., Carbondale, IL 62901

**Phone:** 618-549-2148 **Fax:** 618-549-6423

**Email:** office@firstprescdale.org (church office)

**Web Address:** <http://www.firstprescdale.org>

**Pastor:** Rev. Kerry Bean, Email: [pastorkerry@firstprescdale.org](mailto:pastorkerry@firstprescdale.org)



 **SEPTEMBER** 2024



“Carbondale College” was started under the Alton Presbytery about 1856. Rev. W. S. Post became the principal and served the church during the building of the college. In August 1862 he entered the Army as a Chaplain.

From: *One hundred Yeas “About the Lord’s Work”*